

## Availability Of Services

- ♦ Services are available 7 days a week from 8.30am—7.30pm—North Shore Office 8am—6pm—Central Auckland Branch
- ♦ Sleep-over care will be from 11pm—7am. Other arrangements can be made with Assessment Agencies approval
- ♦ We provide ONLY Personal Care on statutory holidays, unless prior arrangements made

## Geographical Area

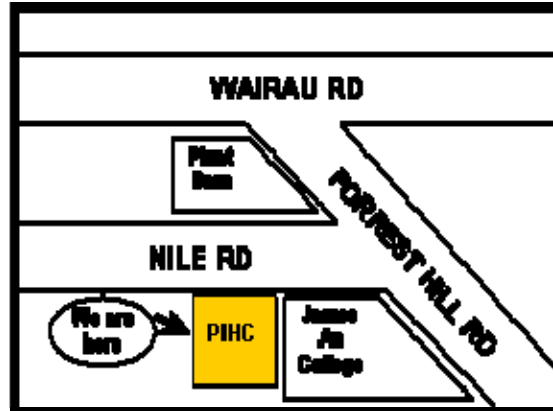
This is a regional service & we provide services for claimants who live in North Shore, Central & South Auckland, West Auckland

## Other Services Available

- ♦ We can assist you in accessing information on your entitlement when you are injured
- ♦ We promote the ACC concept of Injury Prevention
- ♦ We offer Nursing Services to the claimant for FREE at home

## PIHC Head Office Location

1 Nile Road  
Milford  
North Shore City



Ph.: (09) 410 0251  
Fax.: (09) 410 9695  
Email: [info@pihc.co.nz](mailto:info@pihc.co.nz)

### CENTRAL BRANCH

17 Alfred St  
Onehunga  
Auckland

Ph. (09) 634—2194  
Fax.: (09) 634—2195

*We are available during normal working hours*

Monday—Friday  
8.30am— 7.30pm

Weekends & Public Holidays  
9.30am—5pm

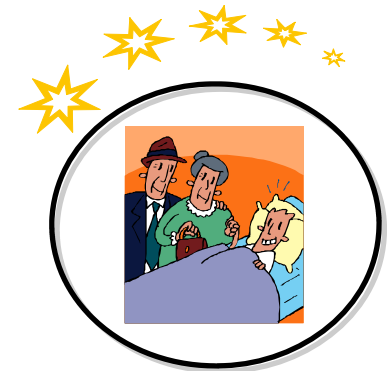
For further inquiries contact a PIHC Service Manager or Service Coordinator— they are happy to assist you at anytime!



**PASIFIKA  
INTEGRATED  
HEALTH CARE LTD  
(PIHC)**

**HOME BASED  
REHABILITATION  
SERVICES**

At No Extra Cost To You  
As An ACC Claimant



**Caring for Pacific Peoples  
Health Needs**

---

## **Welcome to our Home Based Rehabilitation Services**

**This is a FREE SERVICE, & as a Provider we can assist you at home with the following services:**

- ◆ *Home Help*
- ◆ *Personal Care Towards Independence*
- ◆ *Sleep-over*
- ◆ *Child Care*
- ◆ *Home Based Training in Activities of Daily Living*

### **Our Objective**

**To assist & rehabilitate ACC service users & support towards returning to independence & state of well being, while ensuring that the level of care received is of a high standard & quality**

### **Level Of Care**

**The level of care you will receive will be determined by ACC. PIHC staff are highly trained in all aspects of care & will assist you with your home services requirements (as per the referral received from ACC)**

---

---

## **Our Responsibilities**

- ◆ **As a Provider of Home Based Services, we are here to encourage & assist you regain your full independence**
- ◆ **To develop & monitor steps to ensure that achieving rehabilitation is maximised to the greatest extent possible given the nature of your injury**
- ◆ **Prompt you to achieve the goals set in your rehabilitation plan in a way which is most effective for your particular needs**
- ◆ **Take into account the Home Help, Attendant Care & Child Care tasks that other household members can contribute to assist**
- ◆ **Review your progress & discuss further strategies of improving your independence**

### **Please Note:**

**Home Based Rehabilitation Services are NOT intended to replace normal household duties or child care responsibilities that other household members are expected to provide.**

***We are here to assist you towards regaining independence***

---

---

## **Age Group Cover**

**0—80+ years**

### **How To Access This Service**

- ◆ **Contact our office directly (refer details overleaf)**
- ◆ **Contact ACC Needs Assessment Teams (refer White Pages Auckland Phone Directory for all Auckland Areas)**
- ◆ **Contact ACC Case Managers (refer White Pages Auckland Phone Directory for all Auckland Areas)**
- ◆ **Hospital A&E (Direct Referral)**
- ◆ **Hospital Wards (Direct Referral)**
- ◆ **General Practitioner (GP)**
- ◆ **Other Providers**

### **Networks**

- ◆ **Mainstream Providers**
  - ◆ **Other Pacific Providers**
  - ◆ **Family Doctors**
  - ◆ **Voluntary & Church Organisations**
-