

How To Access This Service

Contact Our Offices

North Shore

Ph.: (09) 410 0251

Fax.: (09) 410 9695

Central Auckland

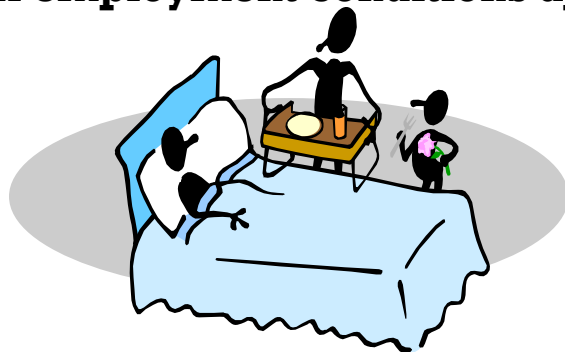
Ph. (09) 634—2194

Fax.: (09) 634—2195

Talk to us about your needs

**Employment of Family Carers
is an option**

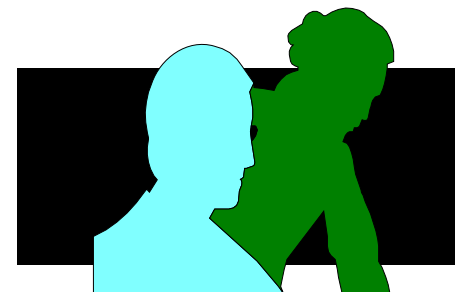
**You can discuss this with us
(all employment conditions apply)**



Pasifika Integrated Health Care Ltd



Services for Special Needs People Under 65 years



This Includes

- ◆ **Intellectual Disability**
- ◆ **Sensory—Deaf & Blind**
- ◆ **Congenital Disability**

Who Are These Special Needs People

- ◆ **They are people with disability that are either born with it, or have developed as they grow older**
- ◆ **They also rely on families & other people for support & assistance**
- ◆ **Special Needs people include those who are deaf & blind**
- ◆ **They are people who want to be treated as equal**



How Can We Assist

Your disability is assessed & your needs identified by the Needs Assessment Service Coordination Agency (NASC) then referred to our service for care & support

This Care & Support Includes

- ◆ **Personal Care**
- ◆ **Household Management (only in areas of the home that the client uses)**
- ◆ **Child care**
- ◆ **Community Engagement**
- ◆ **Outings (as assessed by NASC)**
- ◆ **Support you towards independence**
- ◆ **Assist you to get a job**

